



**M E M O R A N D U M**

Date: March 16, 2017  
To: Board of Park Commissioners  
From: Patrick Merriam, Manager, Park Resources  
Subject: Change in Park Hours for Kerry Park (Franklin Place)

**Requested Board Action**

Parks recently completed a nine-month pilot project in Kerry Viewpoint Park, that changed the operating hours from 4:00 a.m. – 11:30 p.m. to 6:00 a.m. – 10:00 p.m. This was done to respond to concerns regarding illegal behaviors and activities that were occurring in the park.

Based on Seattle Municipal Code Section 18.12.245, the Superintendent, in conjunction with the Board of Park Commissioners holds a public hearing and the Board makes a recommendation on whether to make the change in hours' permanent. This decision is based on staff evaluation and public testimony. The Board's vote can occur the same day as the presentation of the evaluation or at a later date should the Commissioners require additional information to make a decision.

**Staff Recommendation**

Kerry Park meets the established criteria to permanently change the operating hours. Staff recommend approval of changing the operating hours to 6:00 a.m. – 10:00 p.m. in order to reduce illegal behaviors and the number of complaints and negative impacts on the Queen Anne neighbors and community. Staff recommend approval of changing the operating hours to 6:00 a.m. – 10:00 p.m. in order to continue the progress made during the pilot. This adjustment in hours, over the 9-month pilot period, reduced illegal behaviors and noticeably reduced the number of complaints and negative impacts on the Kerry Viewpoint Park neighbors and community. Seattle Parks and Recreation staff have noticed a reduction in beer bottles, and other signs of illicit activities at the park.

**Park Description and location**

Kerry Park, located at 211 W Highland Dr. Seattle, WA 98119 is categorized as a Viewpoint Park. The popular park provides and unsurpassed view of Elliot Bay and Central City. The location provides camera buffs, especially at Sunset and provides a well suited venue for outdoor ceremonies. Amenities include Art in the Park, basketball courts, play areas, and views.

## **Issues**

There have been continuous complaints about illegal behavior occurring at the park. The park gets extremely crowded during the evening hours. Drinking, loud music, unauthorized assembly of large groups and vandalism occur in the evening hours. People congregate in the park at all hours. Neighbors and Parks staff cite four specific reasons for requesting the change in hours:

- 1) Maintenance workers are burdened with cleaning beer cans, broken glass, and laden trash.
- 2) Extensive tagging is pervasive especially late at night and after the park has closed. At sites with similar issues, changing the closing time to 10:00 p.m. enabled SPD to do a sweep through the park, enforce the closure time, and address unwanted activities.
- 3) Neighbors frequently call 911 because of the late night activities which often include loud and boisterous behavior, in addition to illegal activity.
- 4) Community members do not feel safe confronting those who loiter in the park after hours and the earlier closure time enables the police to confront these individuals.

## **Additional Information**

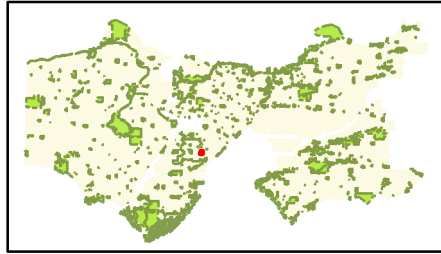
Patrick Merriam: [Patrick.Merriam@Seattle.gov](mailto:Patrick.Merriam@Seattle.gov)

## **Attachments**

Maps

# Kerry Park and Viewpoint

211 W Highland Dr



©2017, CITY OF SEATTLE

All rights reserved.

No warranties of any sort, including accuracy, fitness or merchantability accompany this product.

Map Date: 3/17/2017

